



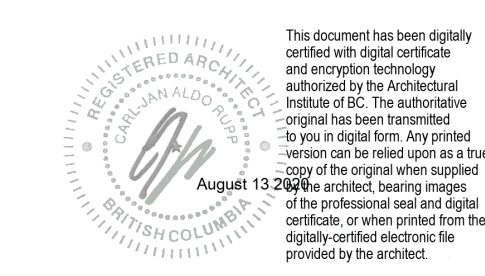
3 NORTH ELEVATION
1 : 100



2 SOUTH ELEVATION
1 : 100

KEYNOTES	
NUMBER	DESCRIPTION
1.1	FIBRE CEMENT PLANKS - COLOUR 1 OFF WHITE: TBD
1.2	FIBRE CEMENT BOARDS - COLOUR 2 TBD
1.3	FIBRE CEMENT VERTICAL SIDING - COLOUR 3 TBD
1.4	FIBRE CEMENT BOARDS - COLOUR 4 TBD
3.1	EXPOSED CONCRETE - FINISH TBD
7.1	PREFINISHED METAL FLASHING - COLOUR TO MATCH WINDOW FRAME
7.2	PREFINISHED METAL FLASHING - COLOUR TO MATCH CLADDING
8.1	WINDOW FRAME
8.2	WINDOW WALL
8.3	OPERABLE WINDOW VENT
8.4	ENTRANCE DOOR
8.5	PATIO DOOR
8.6	INSULATED METAL DOOR
9.1	SIGNAGE - TBD
13.1	FENCE
13.2	WOOD TRELLIS/CANOPY
13.3	PRIVACY SCREEN
14.1	SITE PLANTING - REFER TO LANDSCAPE PLAN
14.2	BICYCLE RACK

3 RE-ISSUED FOR DP 14 AUG 2020
1 ISSUED FOR DP 02 APR 2019
DESCRIPTION DATE



BOWEN AFFORDABLE HOUSING

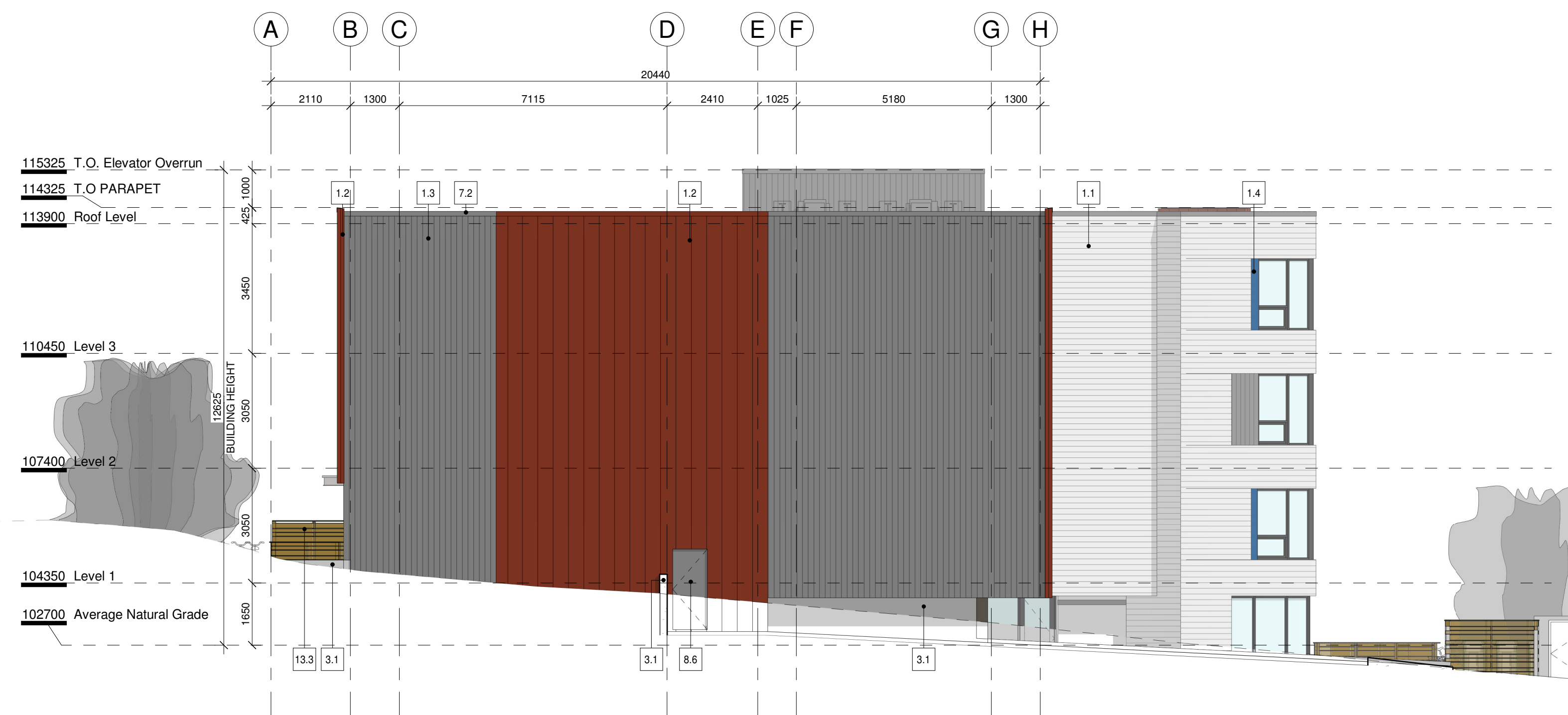
2103 Bowen Road,
Nanaimo, BC

PROJECT #: 18024
ELEVATIONS

A3.00

SCALE: 1 : 100

RECEIVED
DP 1137
2020-AUG-14
Current Planning



2 WEST ELEVATION
1 : 100



1 EAST ELEVATION
1 : 100

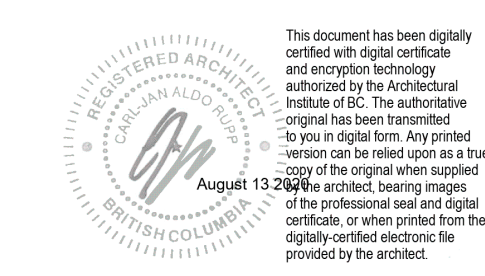


3 SOUTHEAST ELEVATION
1 : 100

KEYNOTES	
NUMBER	DESCRIPTION
1.1	FIBRE CEMENT PLANKS - COLOUR 1 OFF WHITE: TBD
1.2	FIBRE CEMENT BOARDS - COLOUR 2 TBD
1.3	FIBRE CEMENT VERTICAL SIDING - COLOUR 3 TBD
1.4	FIBRE CEMENT BOARDS - COLOUR 4 TBD
3.1	EXPOSED CONCRETE - FINISH TBD
7.1	PREFINISHED METAL FLASHING - COLOUR TO MATCH WINDOW FRAME
7.2	PREFINISHED METAL FLASHING - COLOUR TO MATCH CLADDING
8.1	WINDOW FRAME
8.2	WINDOW WALL
8.3	OPERABLE WINDOW VENT
8.4	ENTRANCE DOOR
8.5	PATIO DOOR
8.6	INSULATED METAL DOOR
9.1	SIGNAGE - TBD
13.1	FENCE
13.2	WOOD TRELLIS/CANOPY
13.3	PRIVACY SCREEN
14.1	SITE PLANTING - REFER TO LANDSCAPE PLAN
14.2	BICYCLE RACK

RECEIVED
DP 137
2020-AUG-14
Current Planning

#	DESCRIPTION	DATE
3	RE-ISSUED FOR DP	14 AUG 2020
1	ISSUED FOR DP	02 APR 2019



BOWEN AFFORDABLE HOUSING

2103 Bowen Road,
Nanaimo, BC

ELEVATIONS

PROJECT #: 18024

A3.01

SCALE: 1 : 100